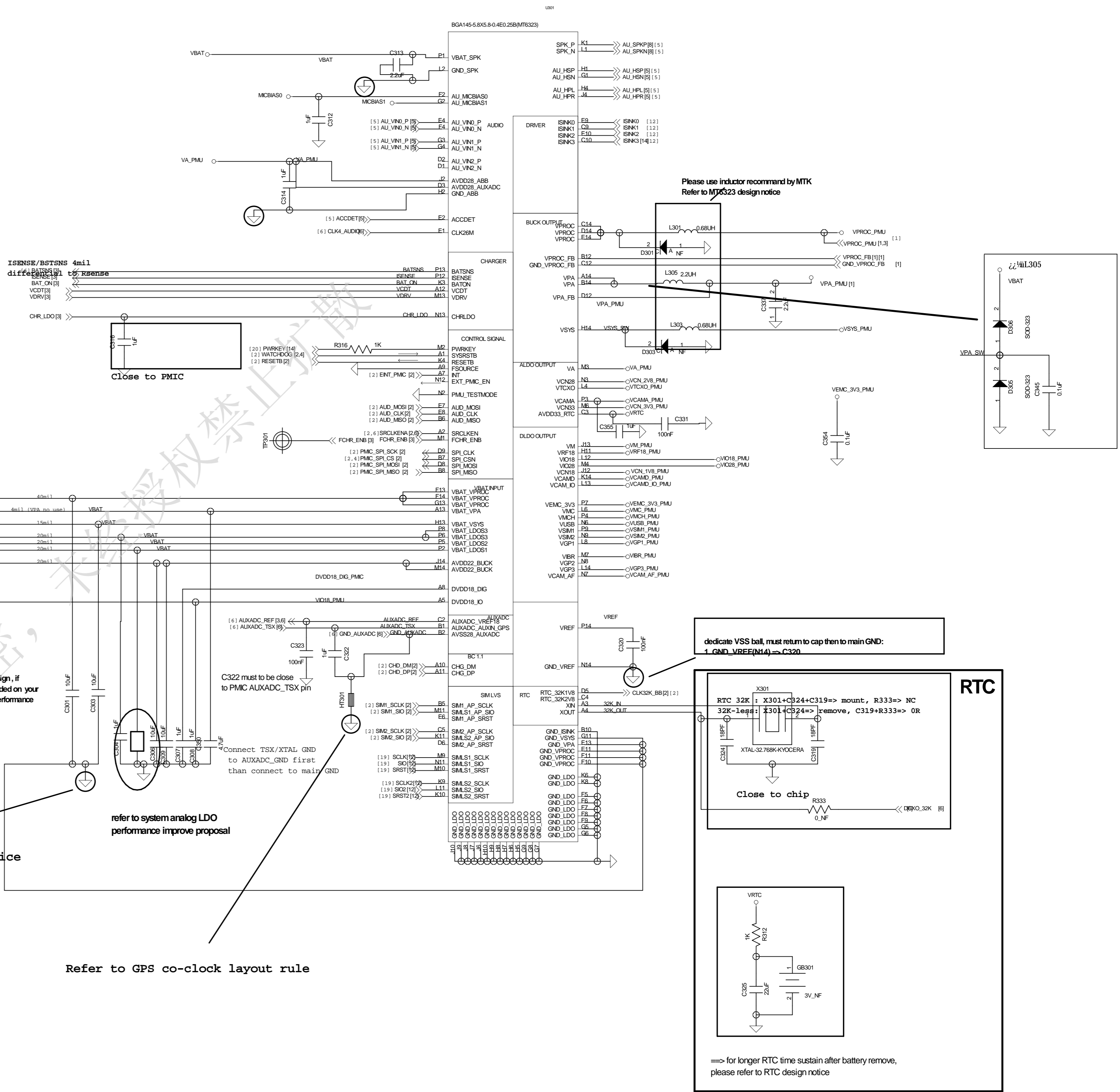
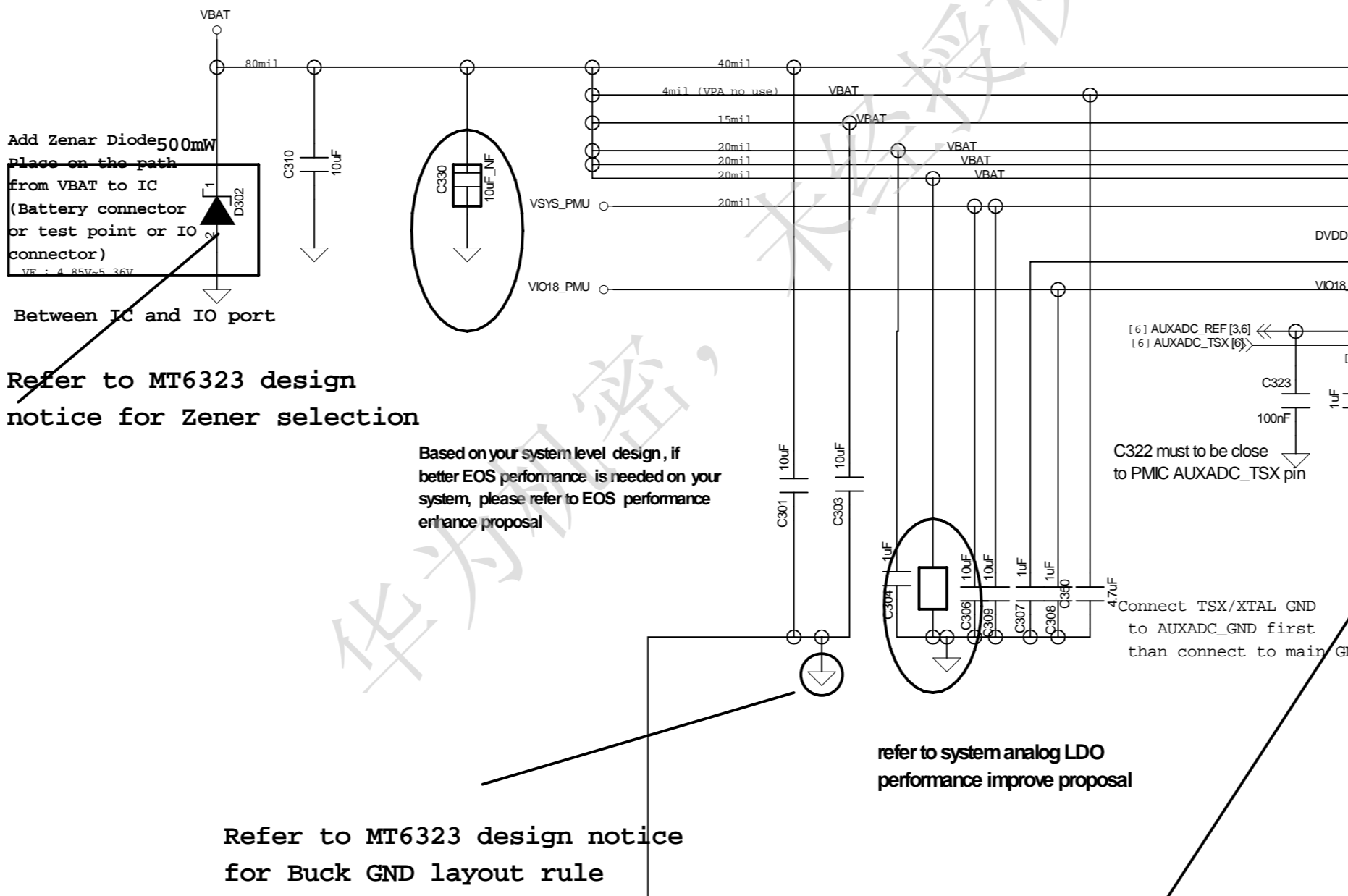
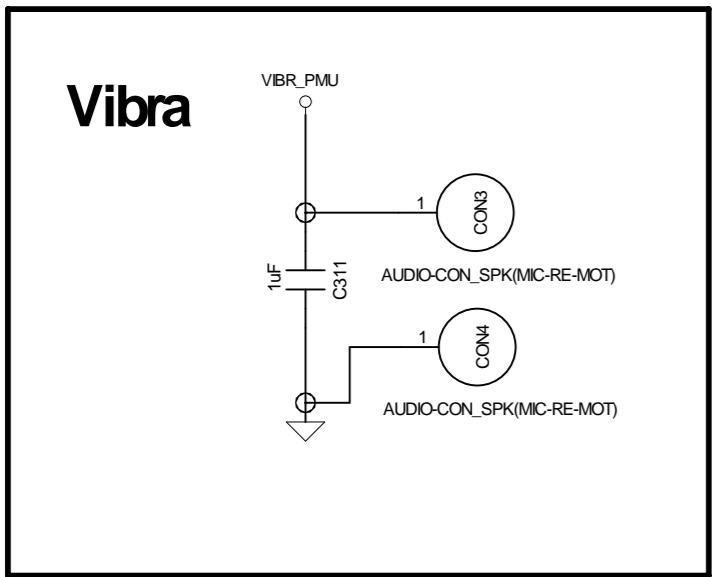
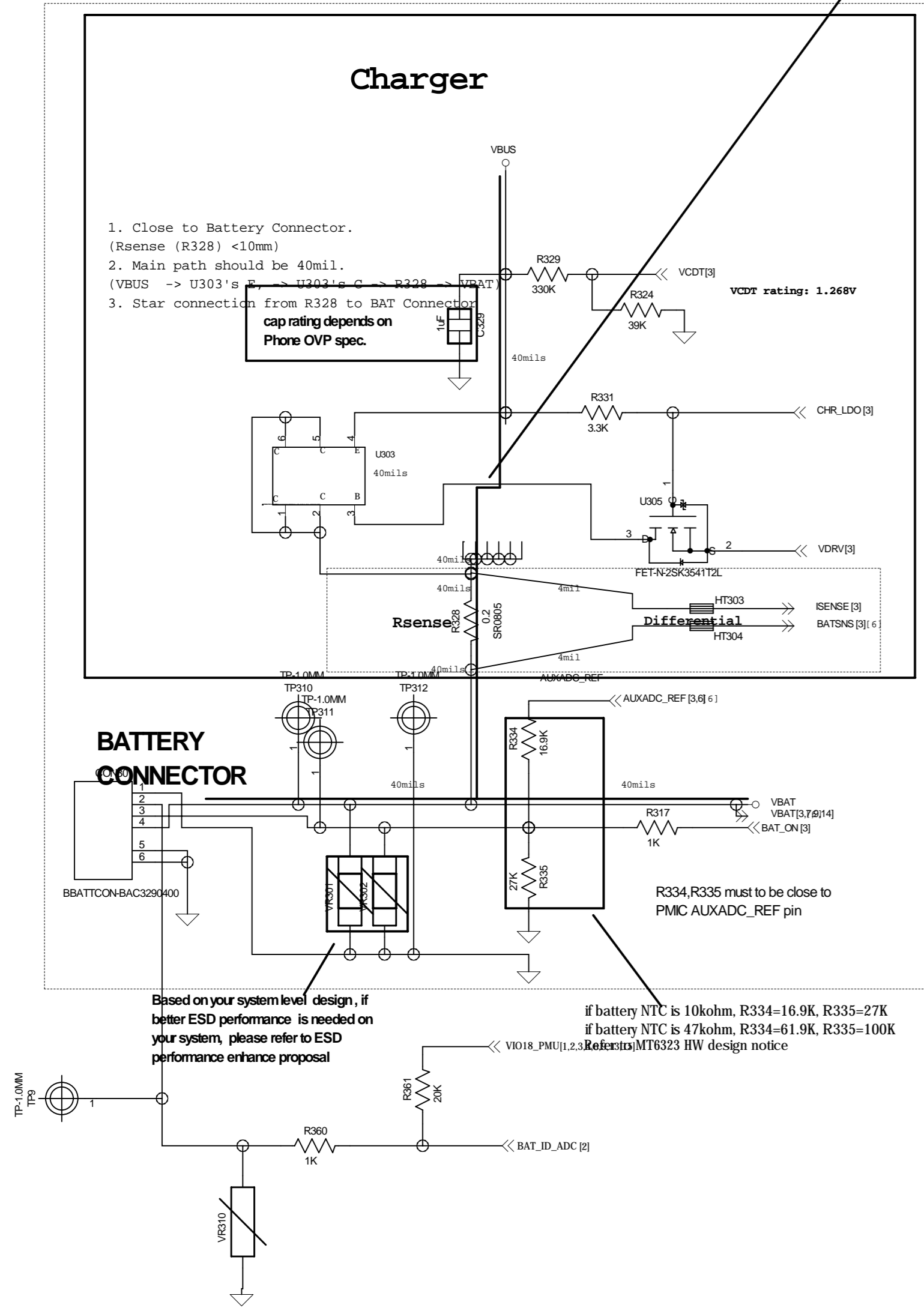
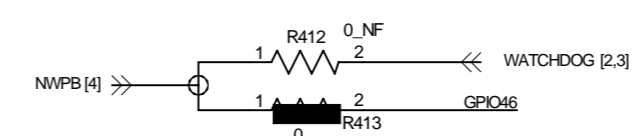
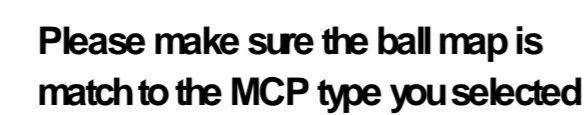


Before you select BJT , please take power dissipation into consideration.
Refer to MT6323 design notice

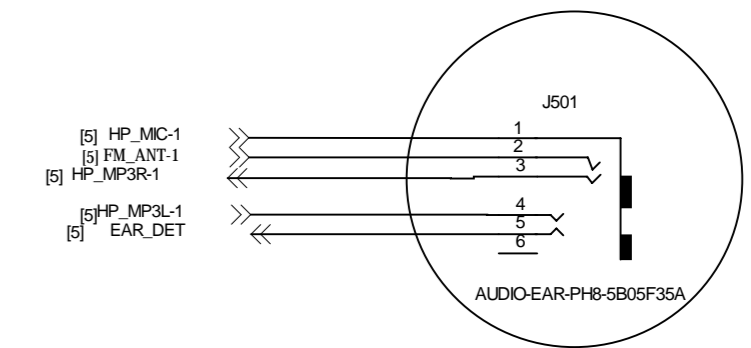
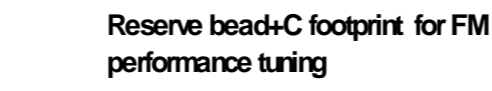


TITLE: <TITLE>		REV: <REV>	
DOCUMENT NO.: 03_MT6323		SIZED: A1	
DEPARTMENT: Hardware DEPT.			
COMPANY: 			
DESIGNER	<DESIGNER>	I got Signed Date: 2013.6.26	SHEET: 3 OF 15



Receiver

Reserve bead+C footprint for FM
performance tuning

MICBISO
Q

if you use digital MIC,
please change cap
(C511,C512) to 1.0uF

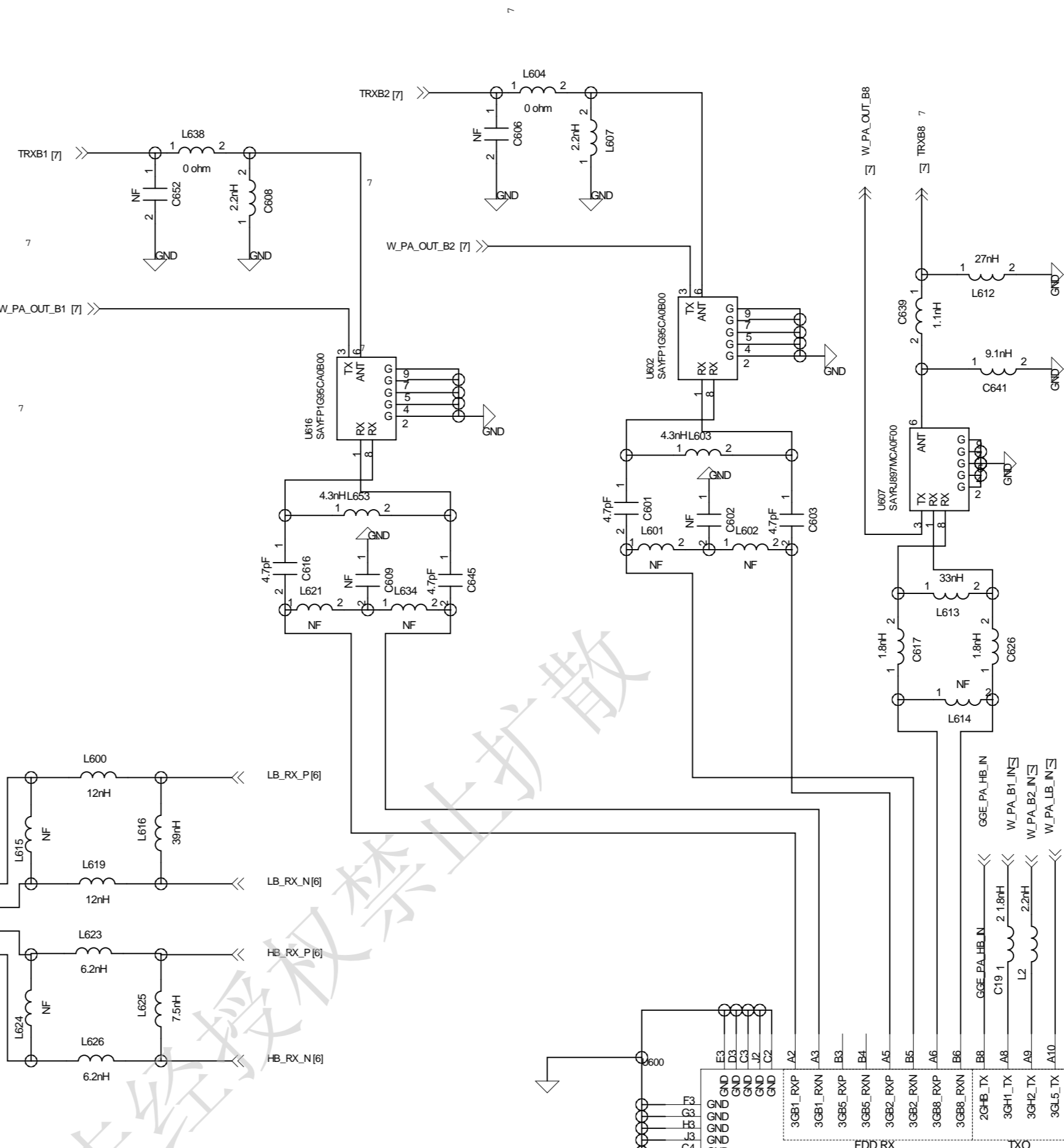
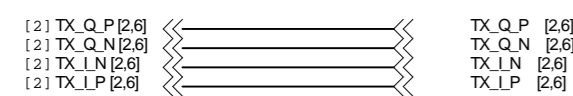
GND of C(4.7uF) and headset should tie together and single via to GND plane

together then single
via to main GND

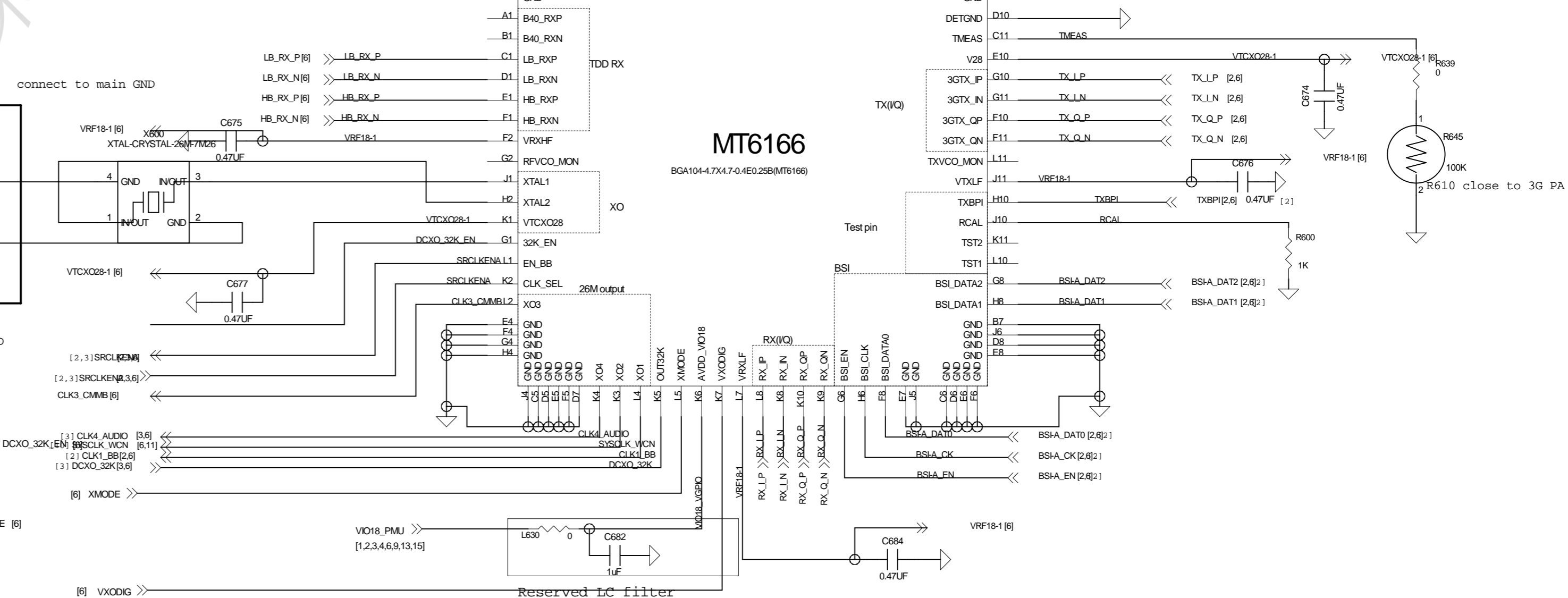
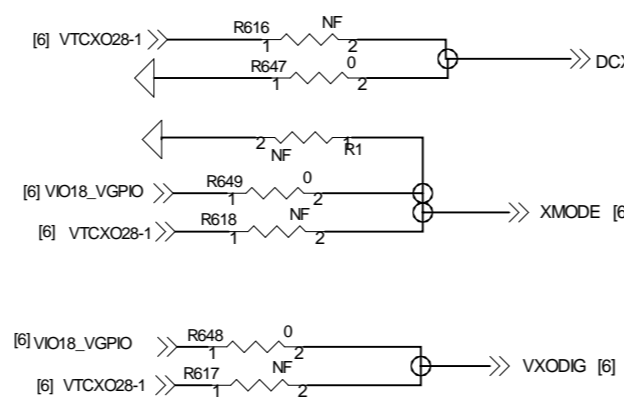
TITLE: <TITLE>		REV: <REV>
DOCUMENT NO: 05_AUDIO	SIZED: A1	
DEPARTMENT: Hardware DEPT.		
COMPANY: 		
DESIGNER: <DESIGNER>	Last Saved Date: 2013-6-26	SHEET: 5 OF 15

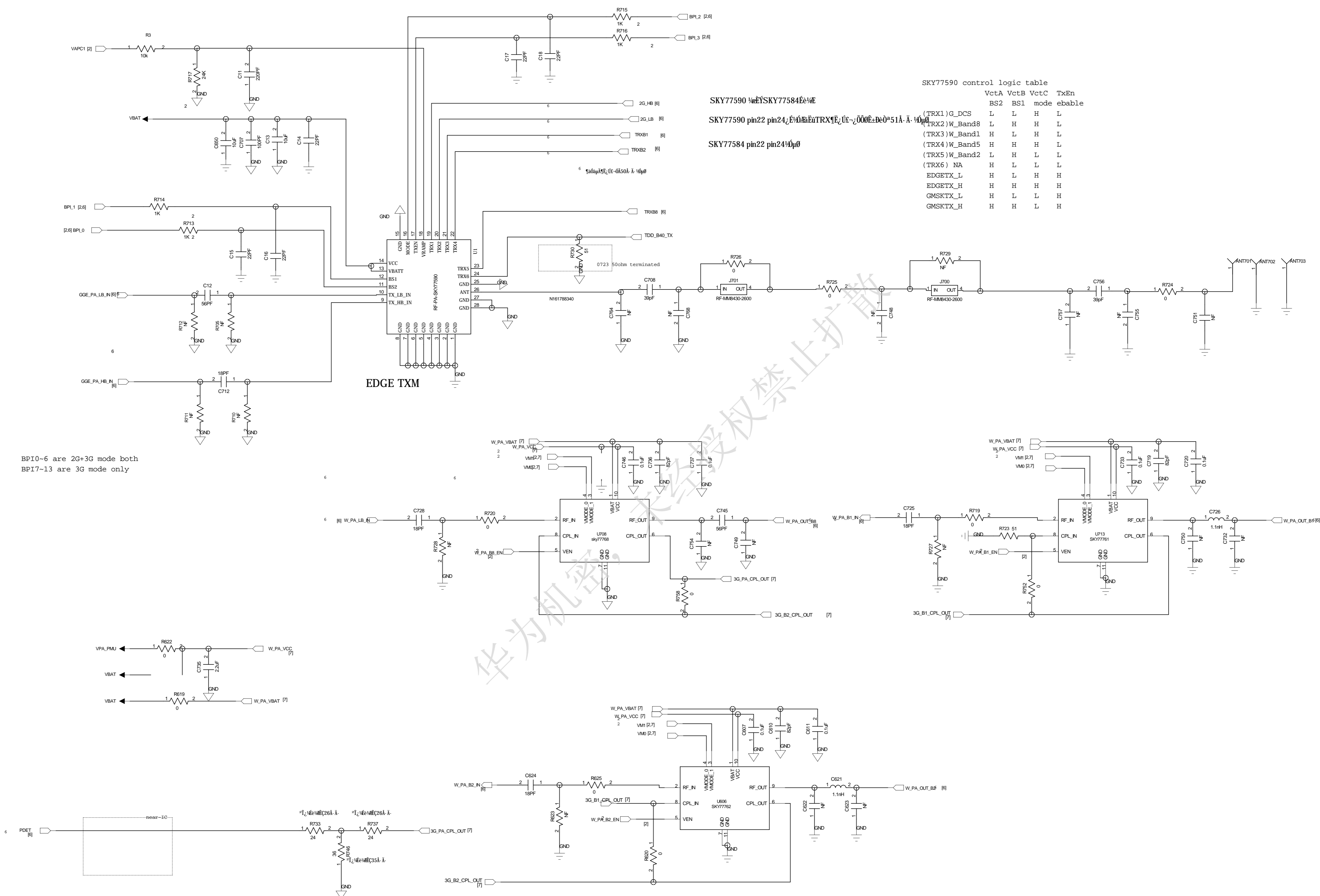
	Enable	VctC	VctB	VctA
LB_GMSK_TX	H	L	H	L
HB_GMSK_TX	H	L	H	H
LB_EDGE_TX	H	L	L	L
HB_EDGE_TX	H	L	L	H
RX1	L	H	L	L
RX2	L	L	H	L
RX3	L	L	H	H
RX4	L	L	L	H

[2]	[2,6,7]	BPI_0	[2,6,7]	[2]
[2]	[2,6,7]	BPI_1	[2,6,7]	[2]
[2]	[2,6,7]	BPI_2	[2,6,7]	[2]
[2]	[2,6,7]	BPI_3	[2,6,7]	

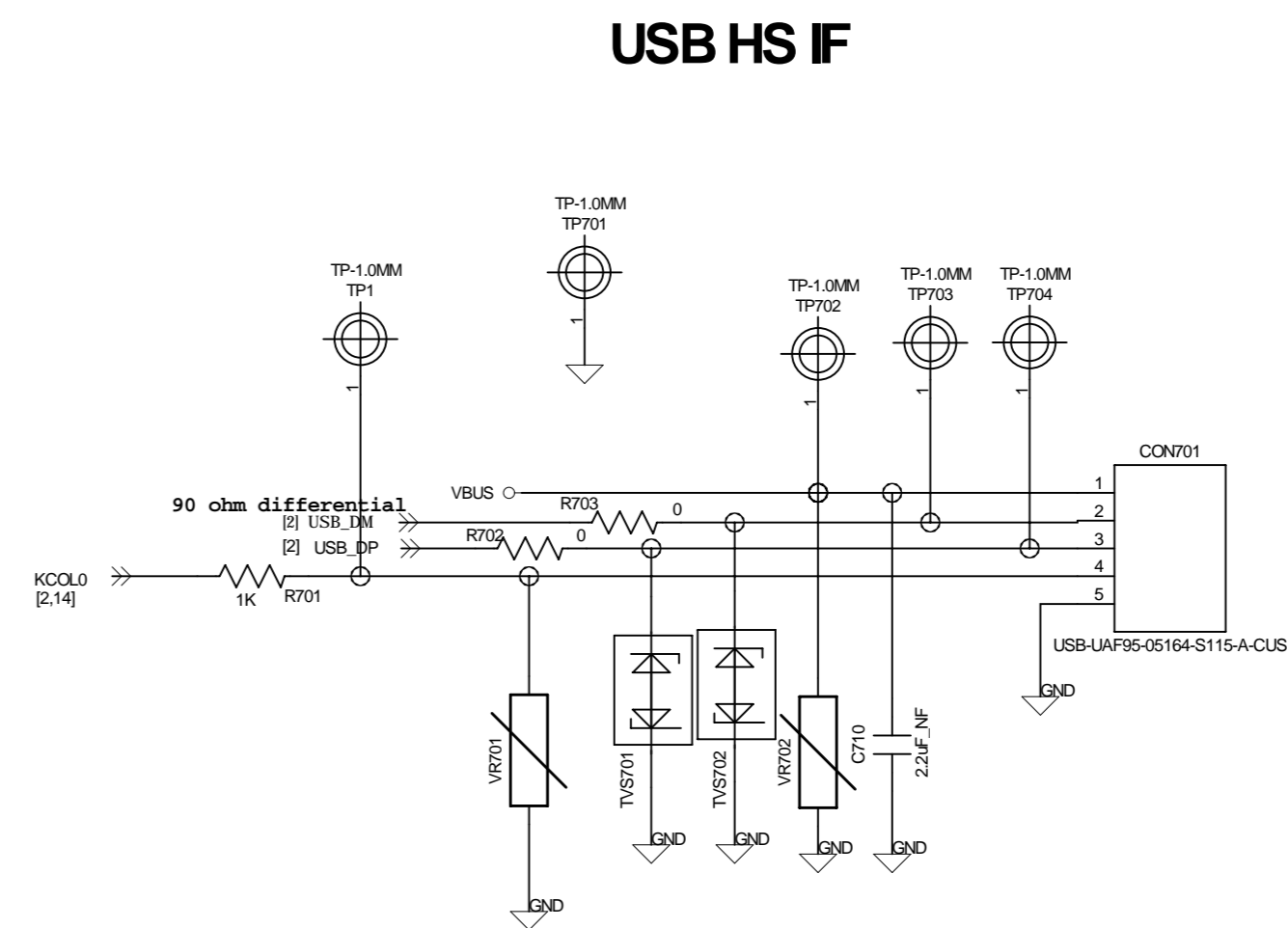
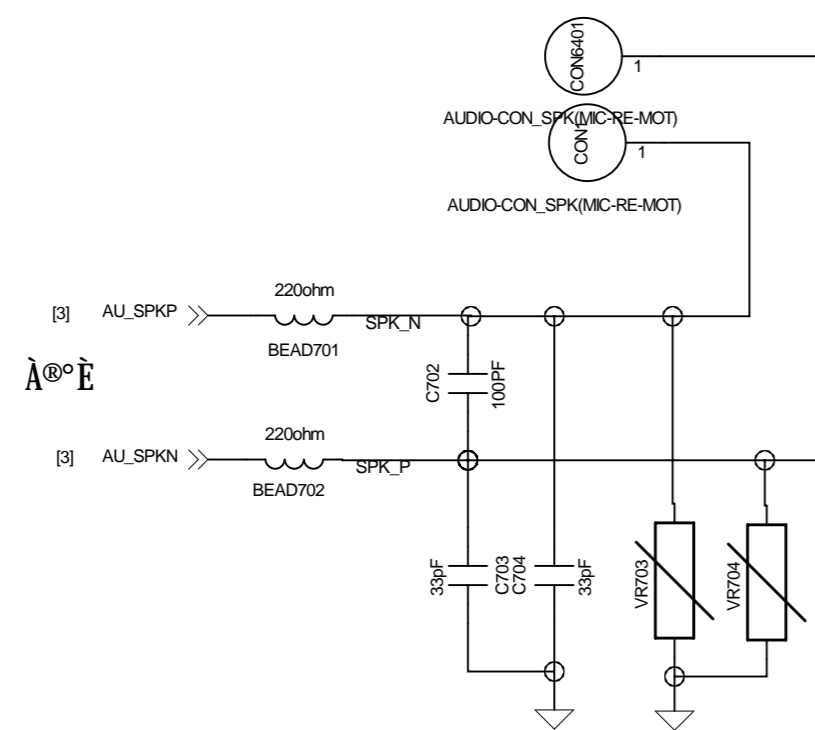


MODE \ Logic	DCXO	XMODE	VXODIG
	32K_EN		
DCXO + 32K XO	0(GND)	1(VIO18)	1(VIO18)
DCXO + 32K-Less	1(VTXO28)	1(VTXO28)	1(VTXO28)

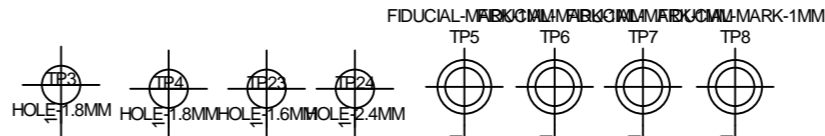




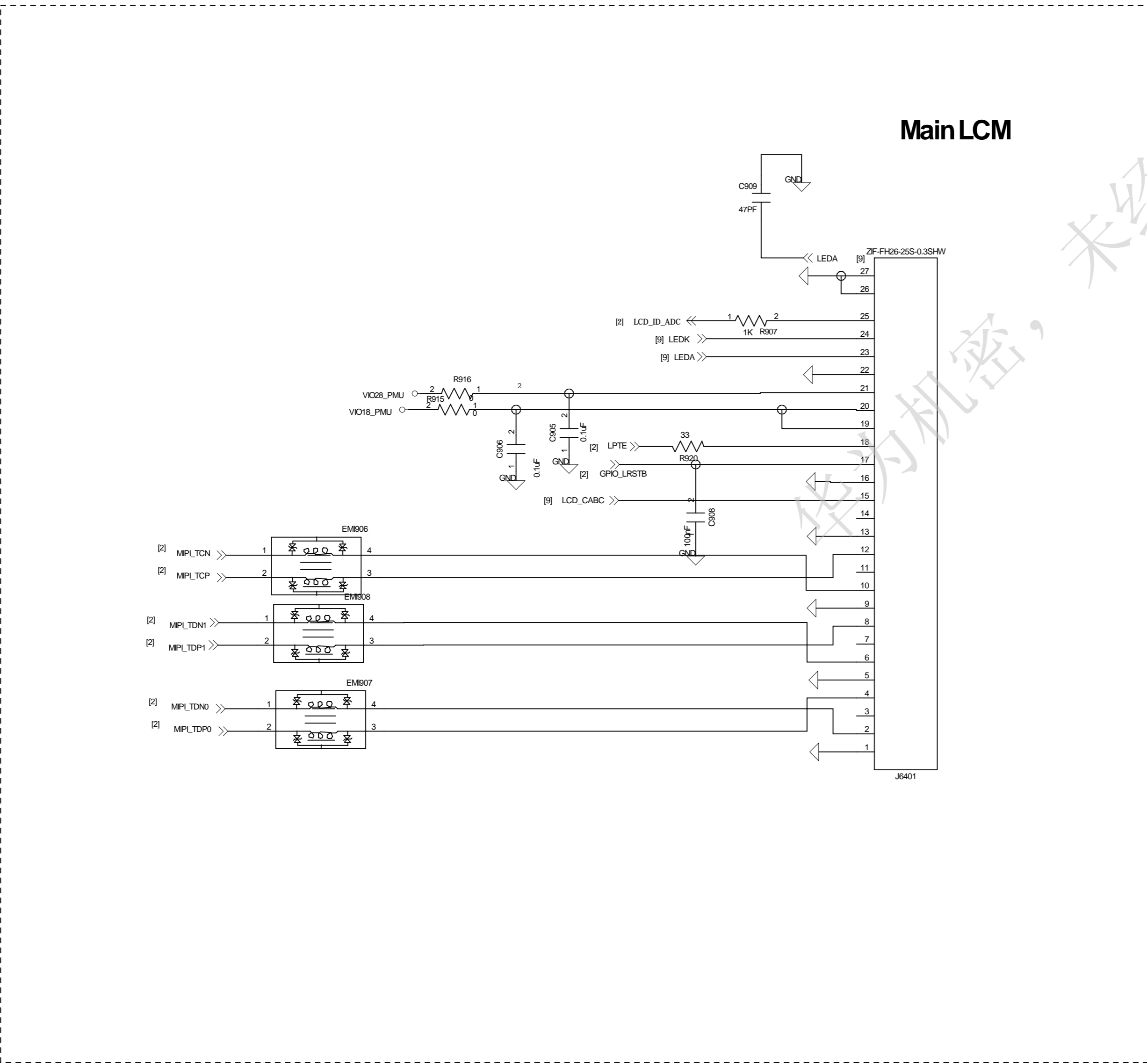
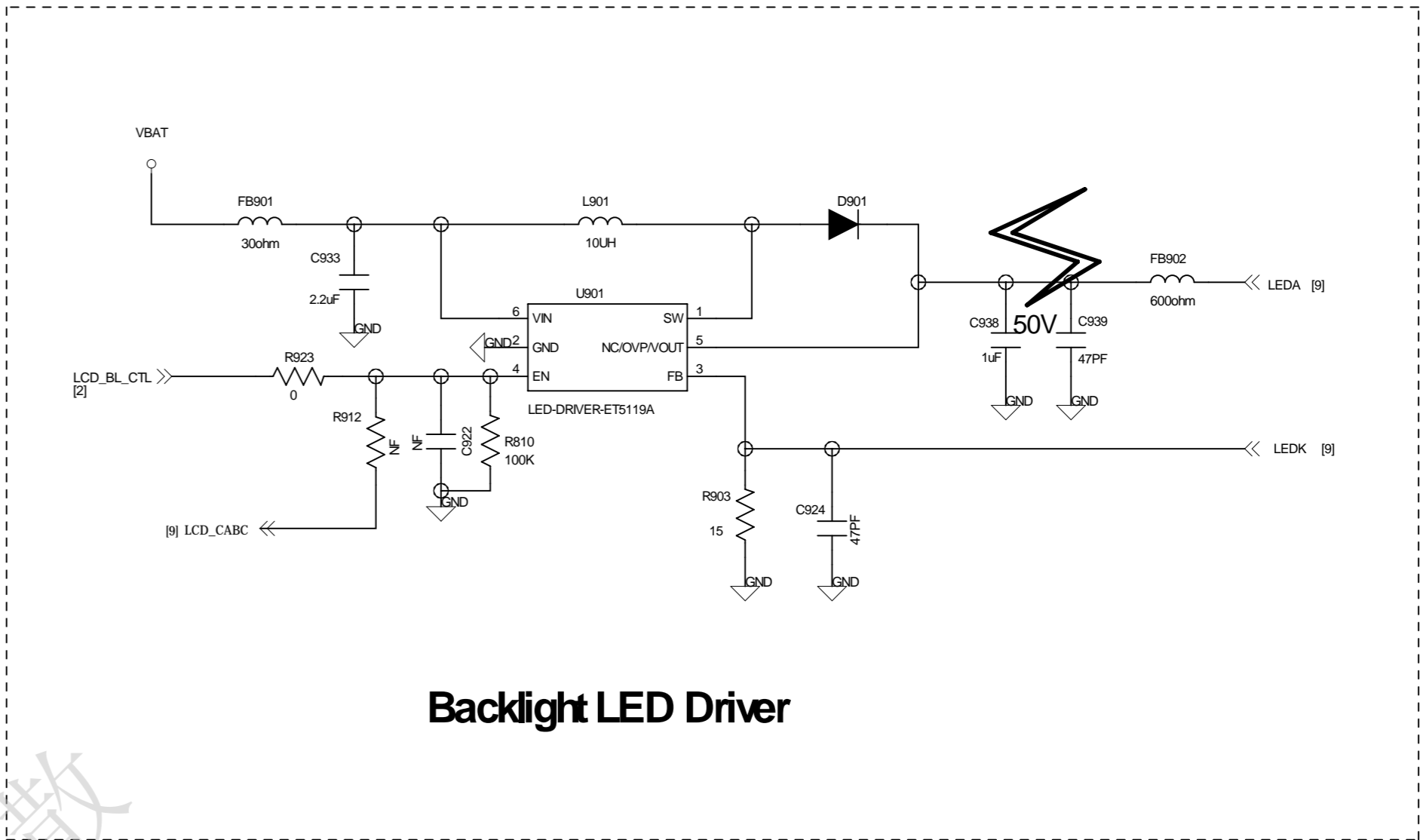
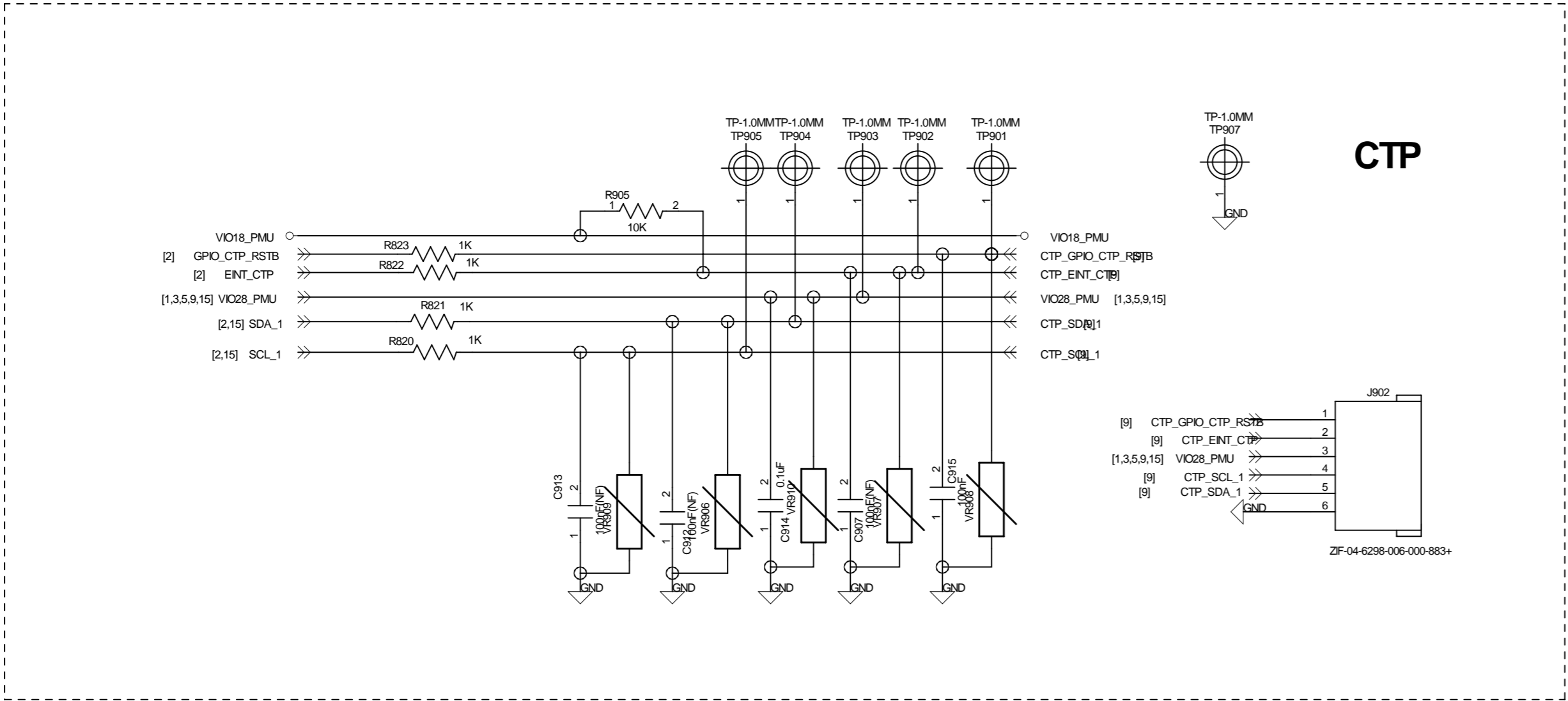
BPI0~6 are 2G+3G mode both
BPI7~13 are 3G mode only

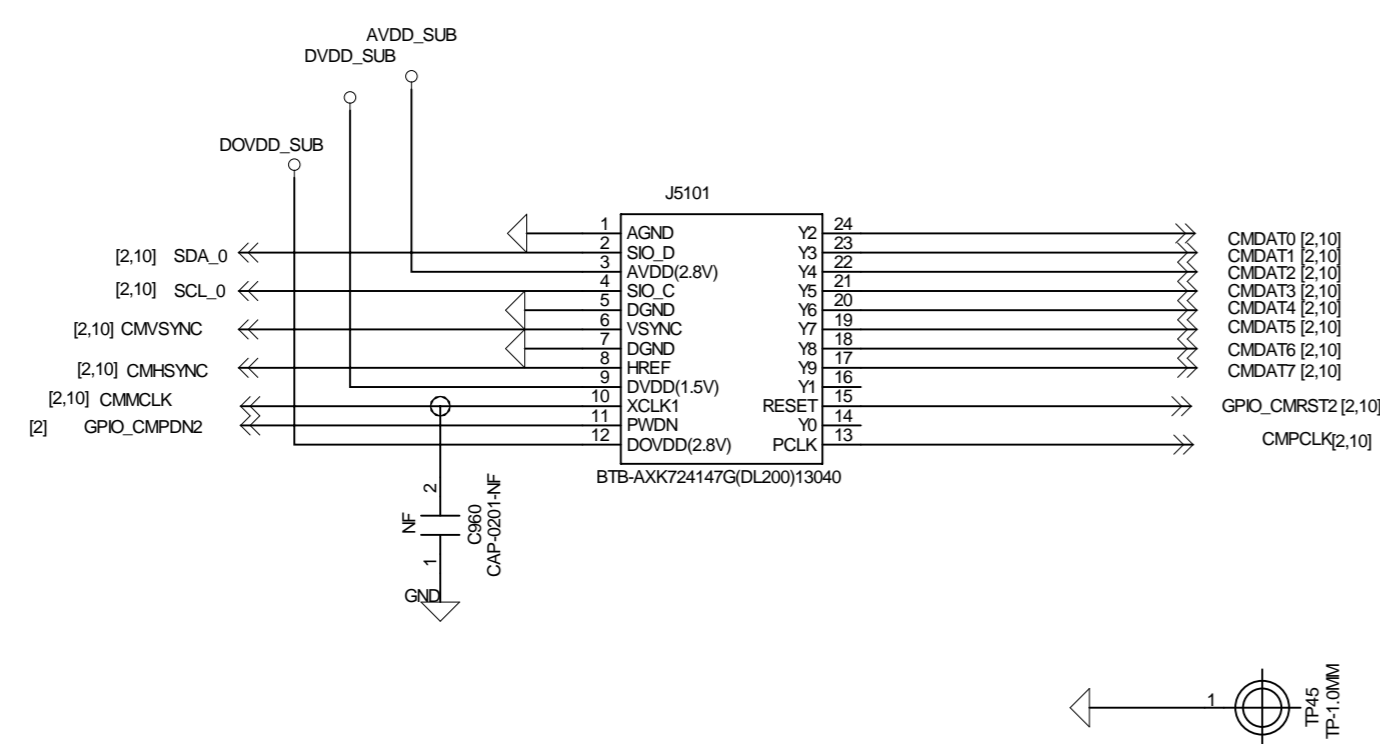
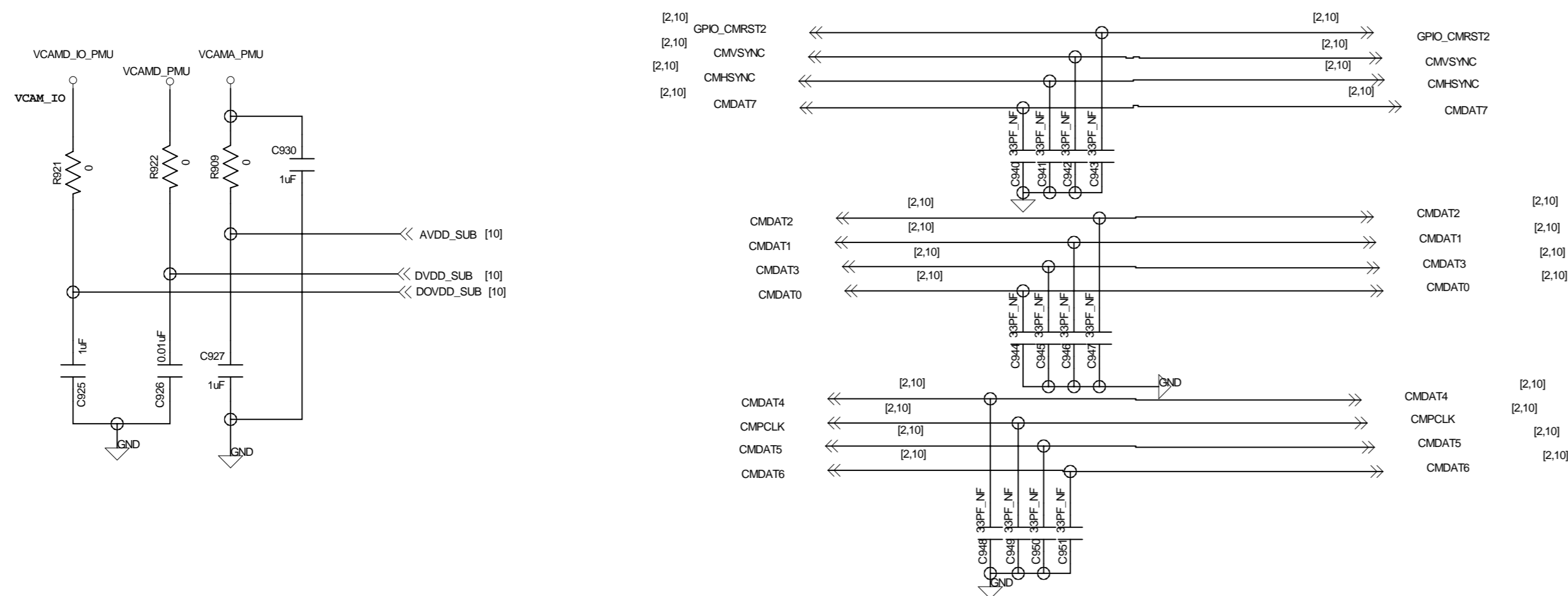


S701
1
SN-23X5



TITLE:	<TITLE>	REV:	<REV>
DOCUMENT NO:	07_USB	SIZE:	A1
DEPARTMENT:	Hardware DEPT.		
COMPANY:			
DESIGNER:	<DESIGNER>	Last Saved Date:	2013-6-26
SHEET:	8	OF	15



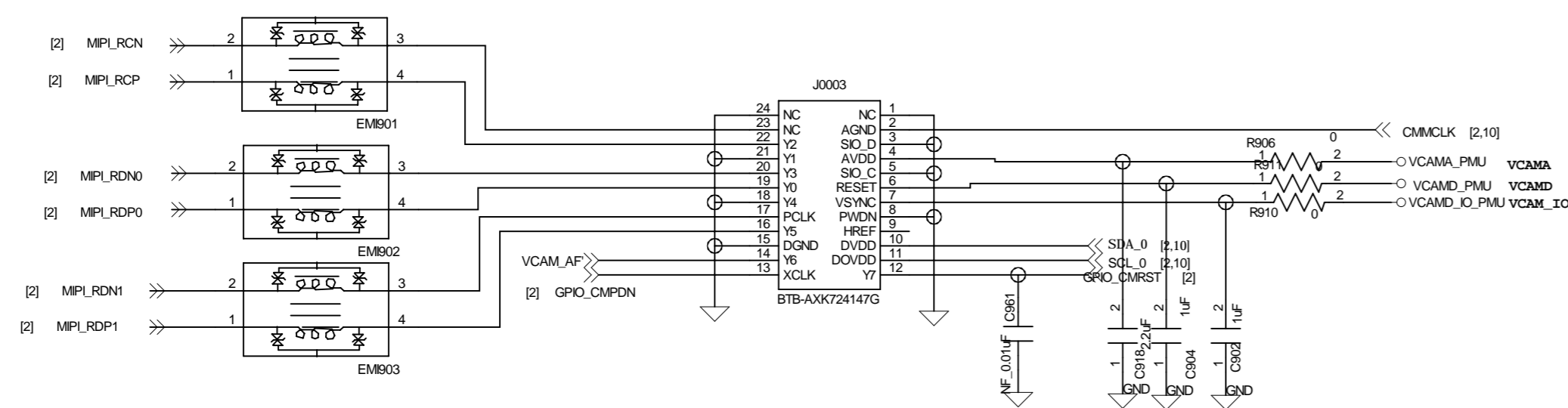


FRONT_camera

light sensor 0x90 Write(STK3171)

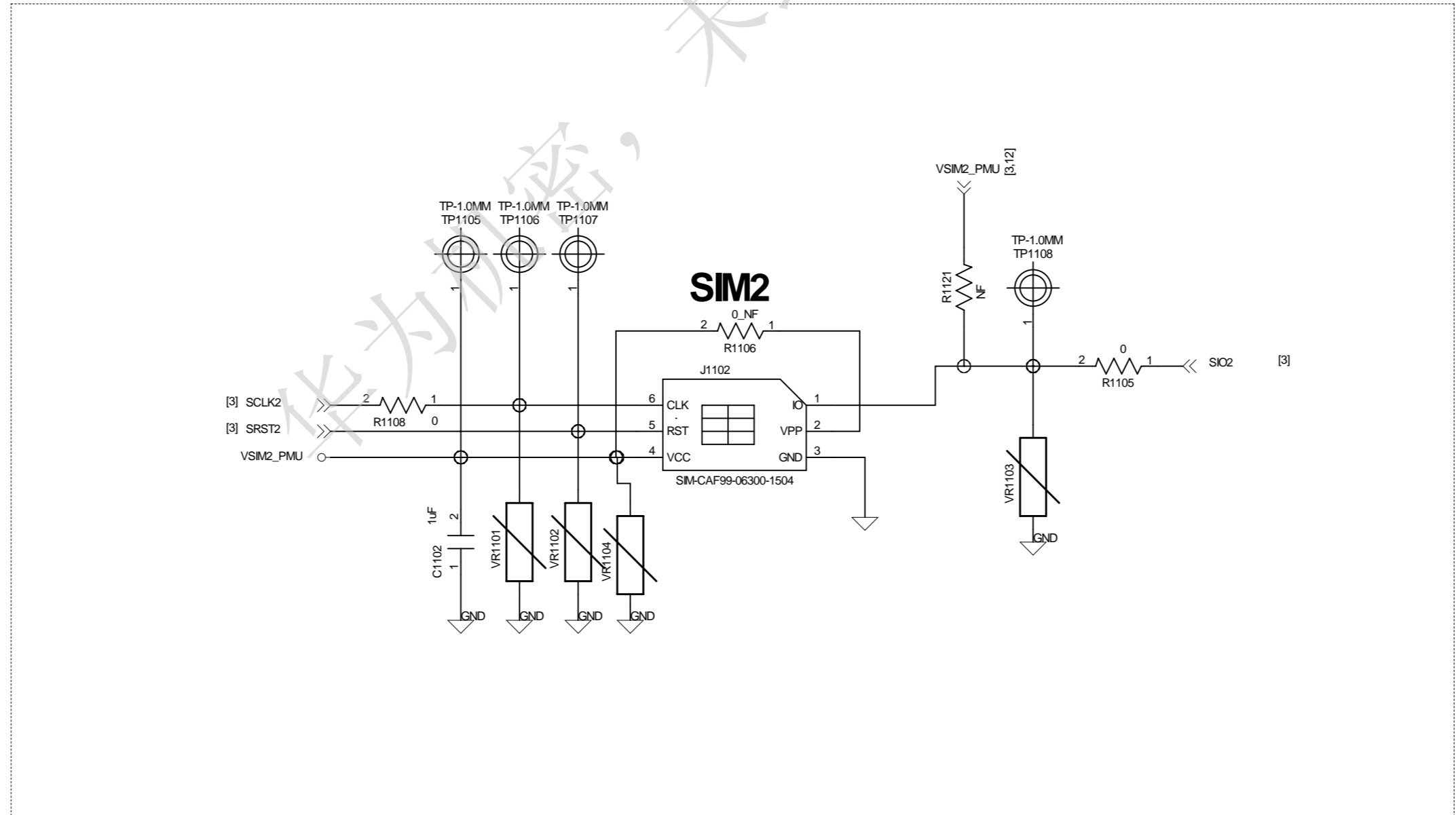
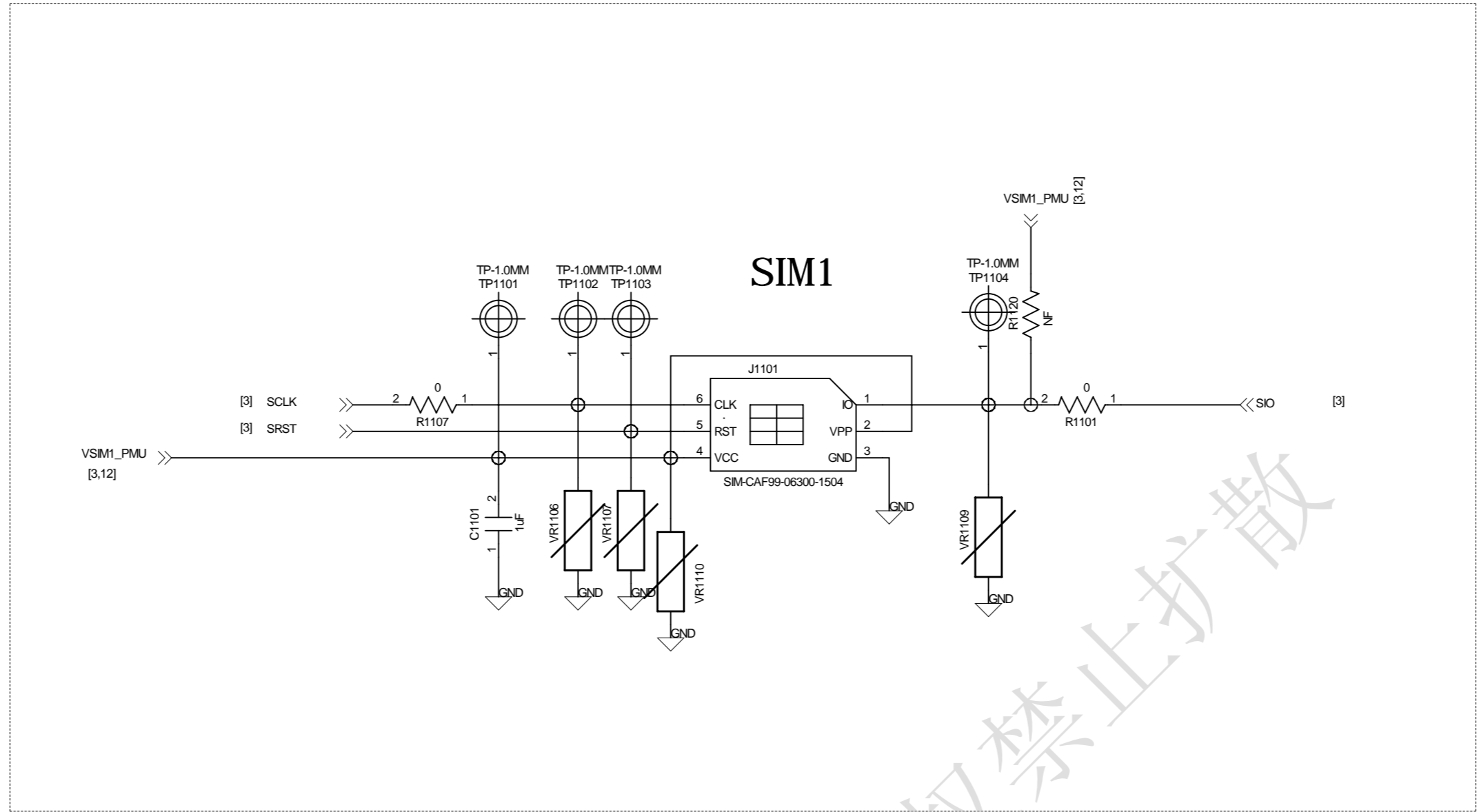
light sensor 0x46 Write (LTR-558ALS)

Main Camera / Sub Camera share power domain design
should double check the voltage level is compatible




MAIN_camera

TITLE:	<TITLE>	REV:	<REV>
DOCUMENT NO:	09_CAMERA	SKED:	A1
DEPARTMENT:	Hardware DEPT.		
COMPANY:	WINGTEC		
DESIGNER:	<DESIGNER>	Last Saved Date:	2013-6-26
SHEET:	10	OF	15

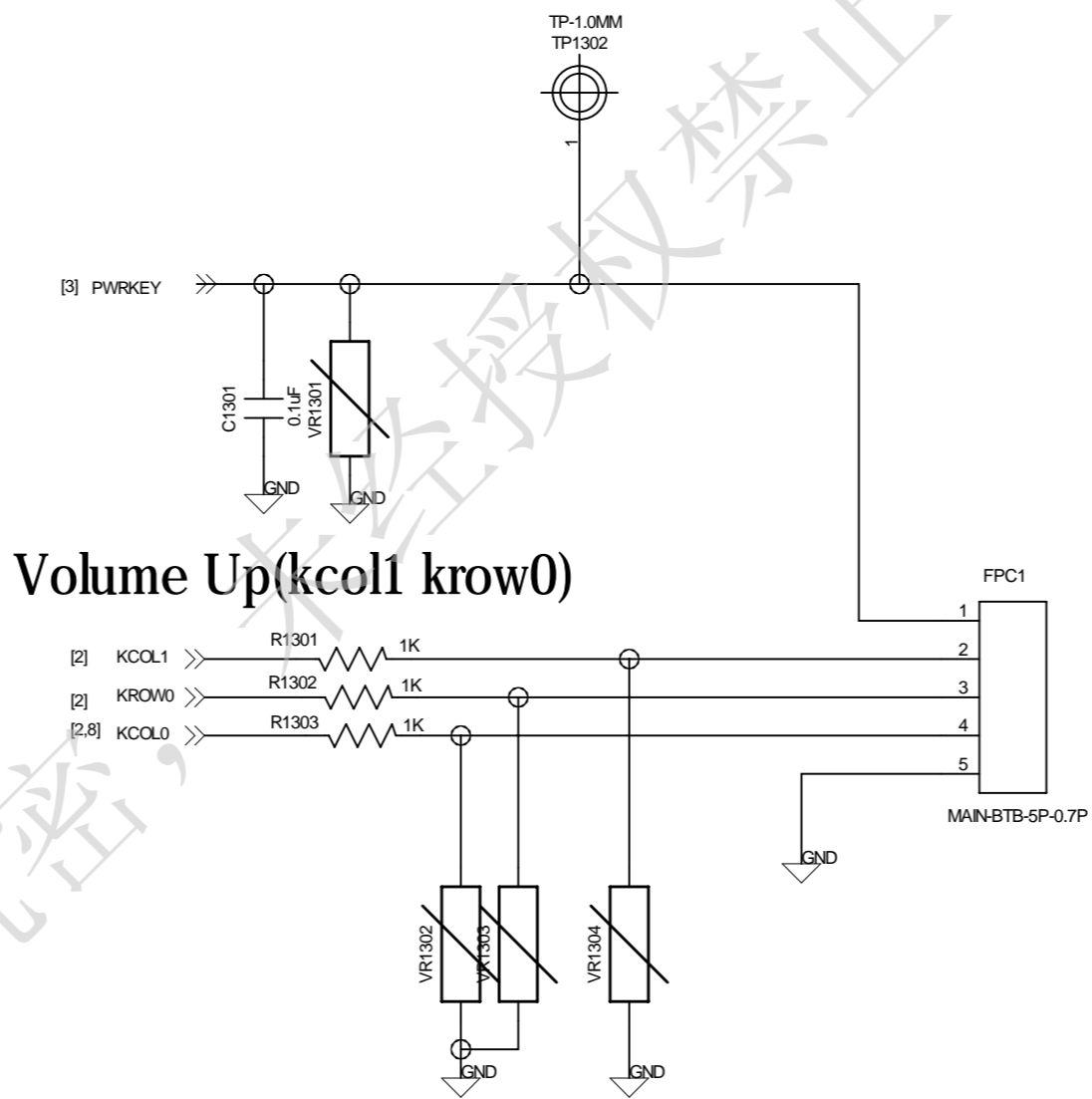




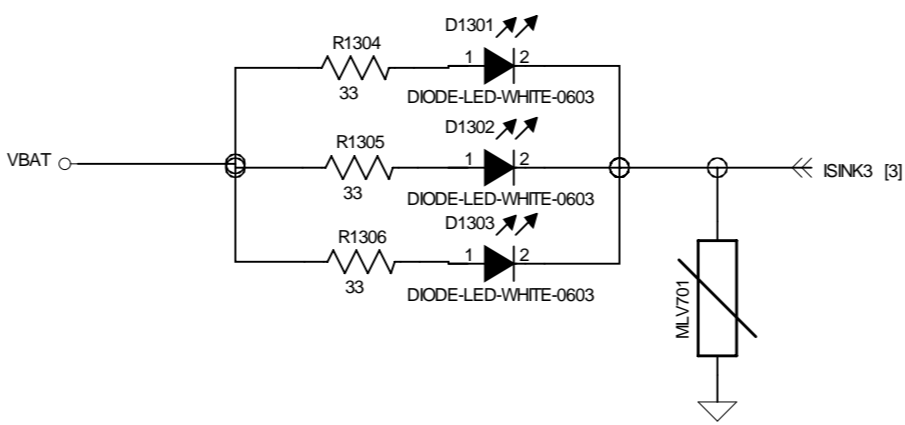
TITLE: <TITLE>		REV: <REV>	
DOCUMENT NO.: 12_MEMORY_CARD		SIZED: A1	
DEPARTMENT: Hardware DEPT.			
COMPANY: 			
DESIGNER: <DESIGNER>	Last Saved Date: 2013-6-26		SHEET: 13 OF 15

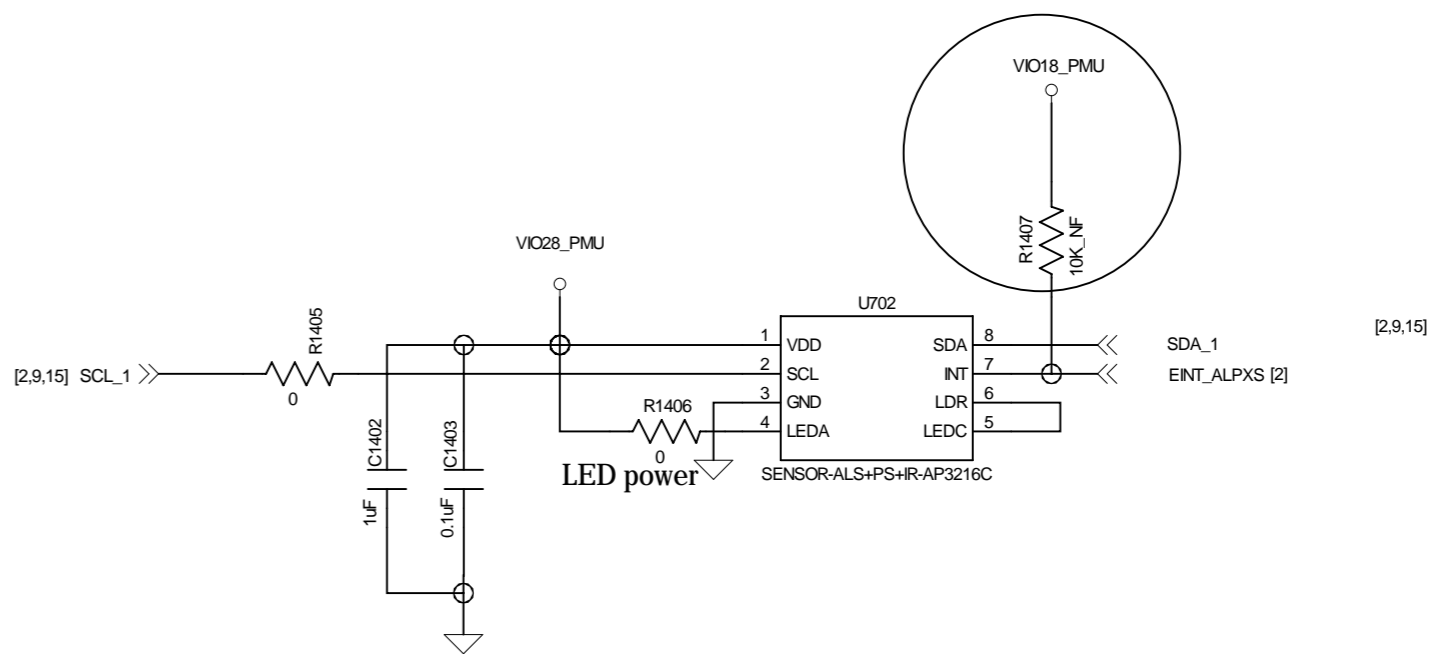
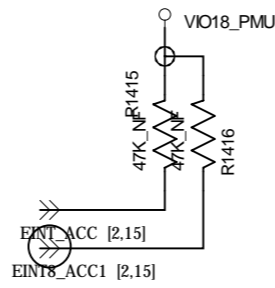
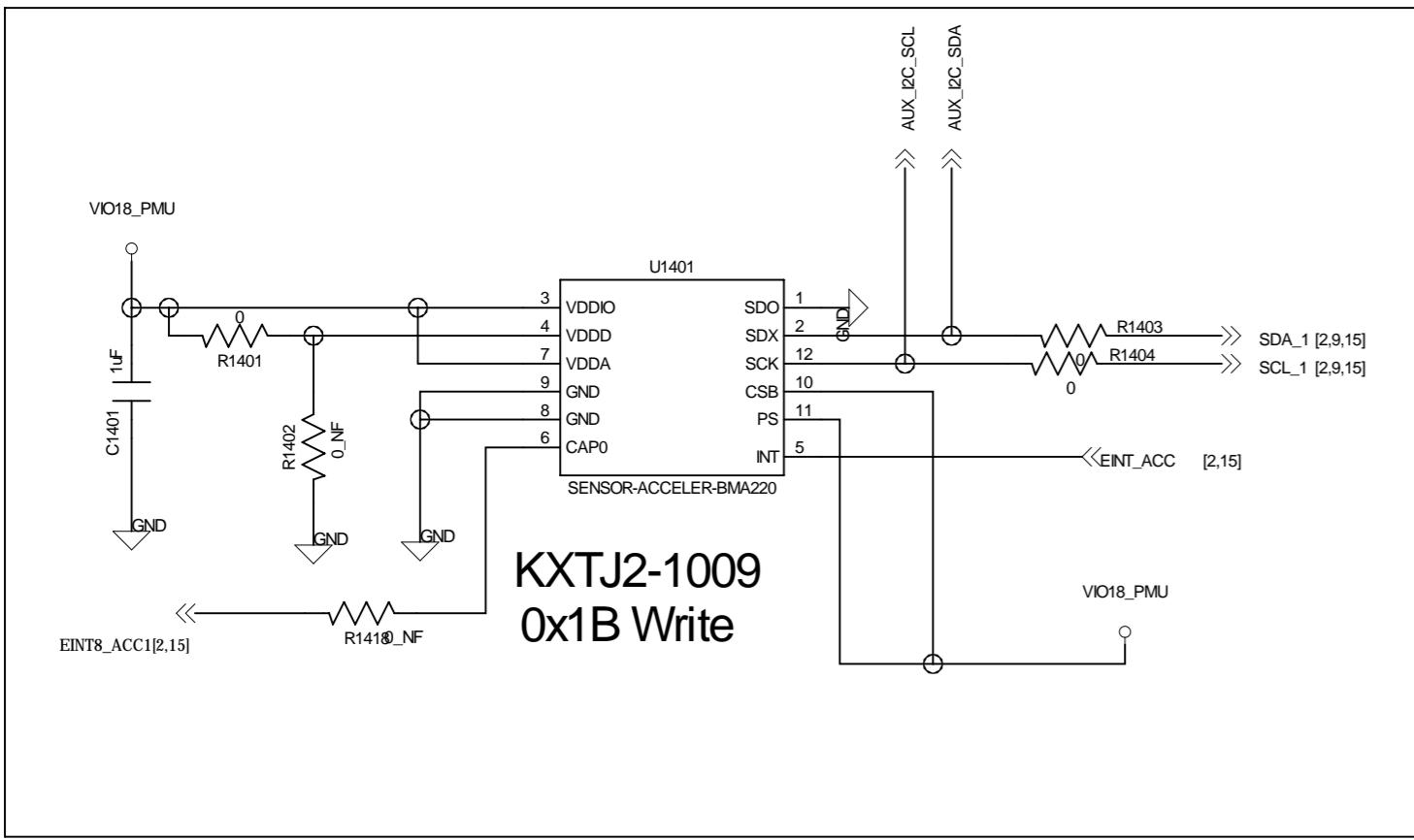
Power Key

DO NOT put pull-up resistor on PWRKEY



Volume Down(kcol0 krow0) For USB download





ALS+PS+IR

华为机密，未经授权禁止扩散